

# Installment Manual (X1)

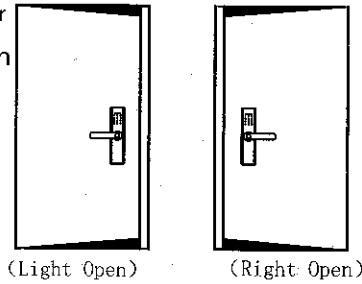
Product performance:

Home door lock, suitable for the indoor door lock  
Suitable to 38-50mm thickness door

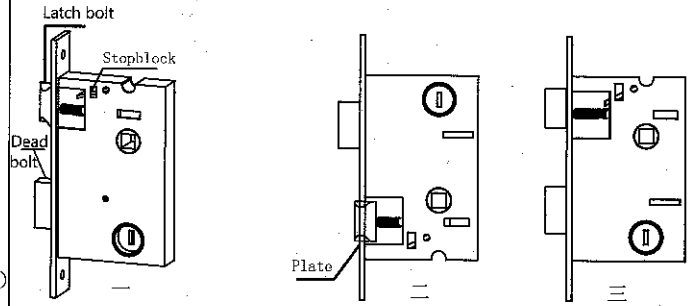
## Remind

### 1. Determine the door direction

Stand outside of the door  
Adjust the direction of the handle and latch bolt according to the opening direction when installing the door.



### 2. Change lock body direction



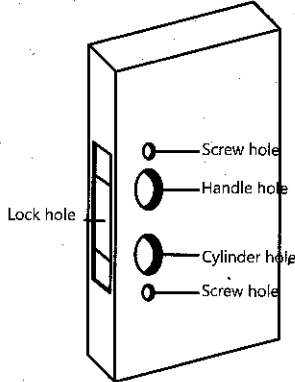
When installing the lock body, the latch bolt is on the upper side, the dead bolt is on the lower side, and the inclined surface of the latch bolt is facing the opening direction

1. Reserve the lock body and latch bolt is down (二)
2. Push the latch bolt lower than front plate, stopblock down and rotate 180 degrees
3. Push the latch bolt into hole. (三)

### 3. Cutting template

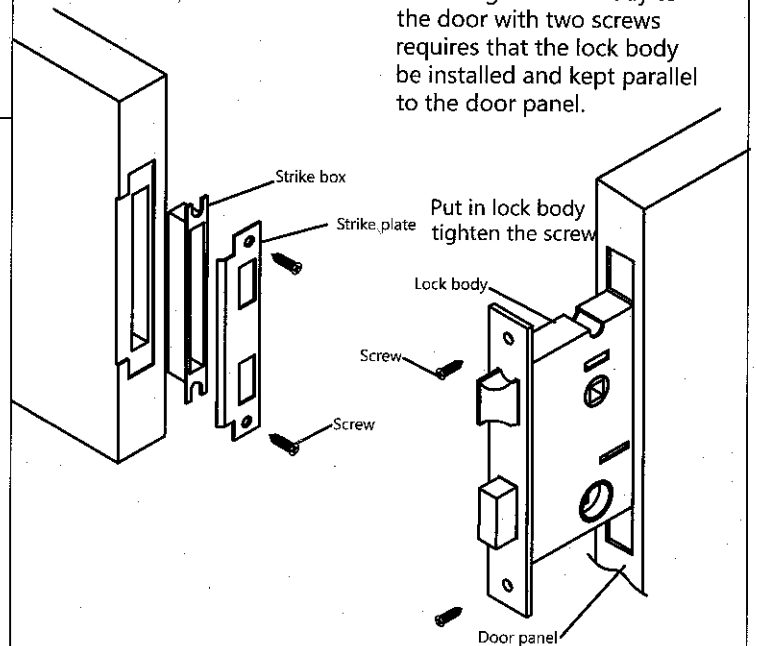
1. Please refer template carefully to drill hole

2. If there is a deviation in the hole, the lock body and panel assembly are put into the door and the hole is corrected until appropriate.



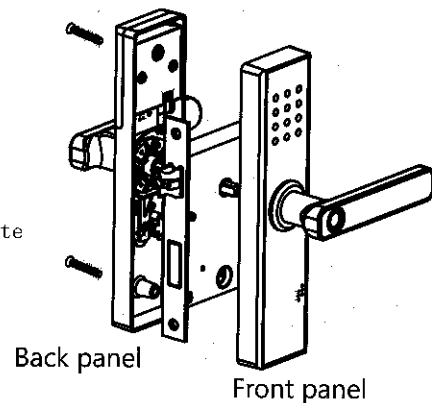
### 4. Install lock body & INSTALL STRIKE BOX

Mounting the lock body to the door with two screws requires that the lock body be installed and kept parallel to the door panel.



### 5. Install lock

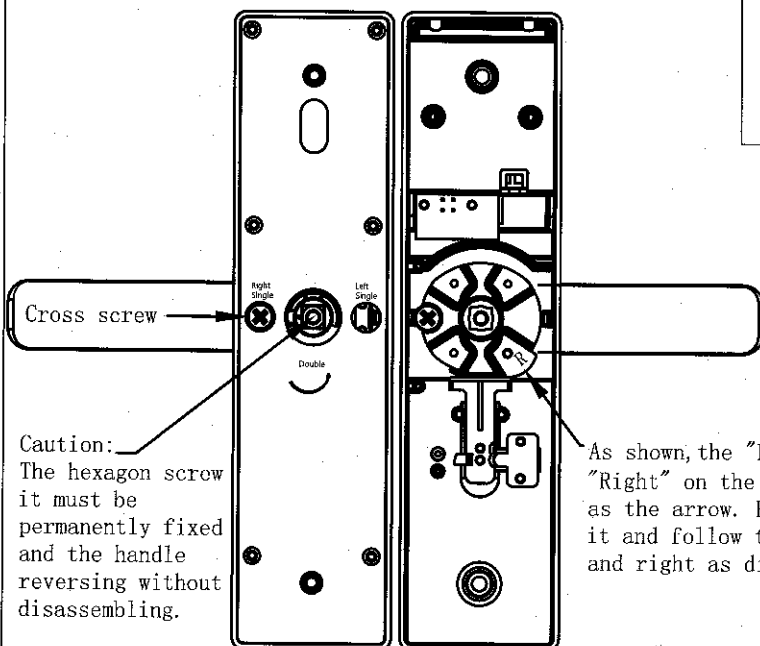
Front panel and back panel docking power cord



### Handle Reversing Method

1. Remove the cross screw as the drawing and turn the handle 180 degrees in the direction of the arrow.
2. After adjusting the direction of the handle, then install the cross screw to the original position and tighten it to complete the reversing.

Handle reversing method as below drawing:

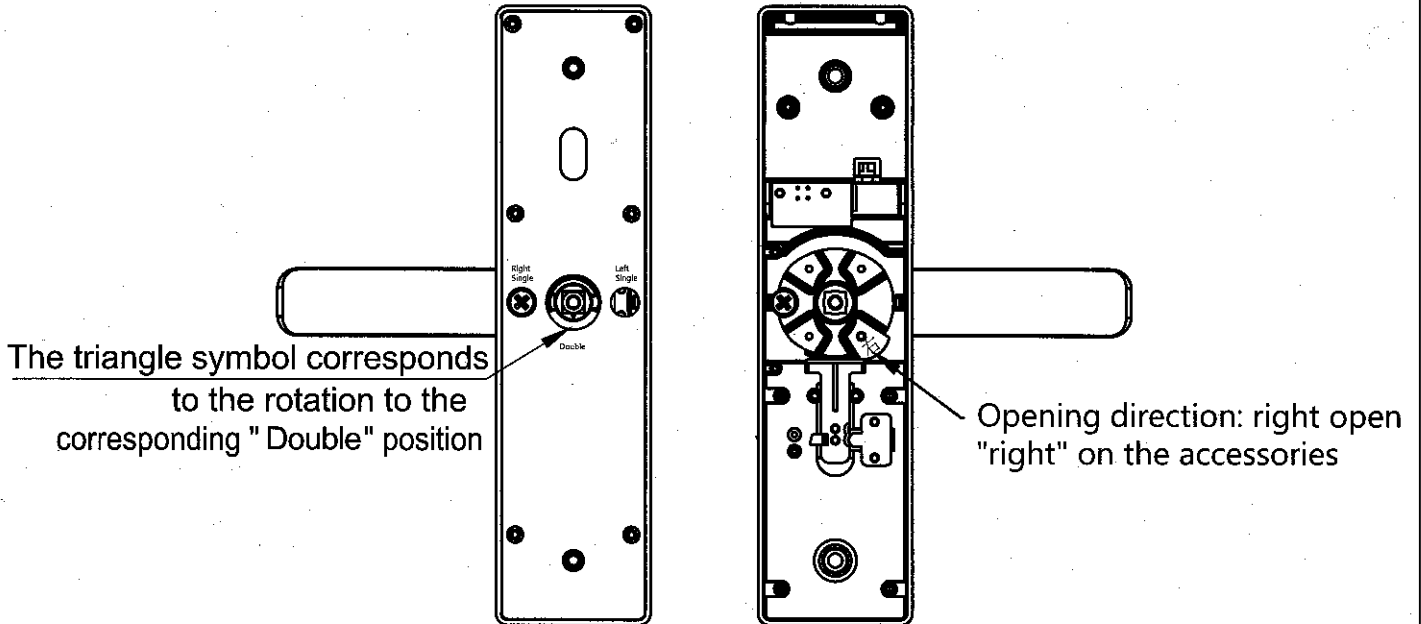


Caution:  
The hexagon screw it must be permanently fixed and the handle reversing without disassembling.

As shown, the "Left" and "Right" on the spare parts as the arrow. Please operate it and follow the left and right as diagram.

# Diagram of installation direction (X1)

Door direction: Right open



Door direction: Left open

